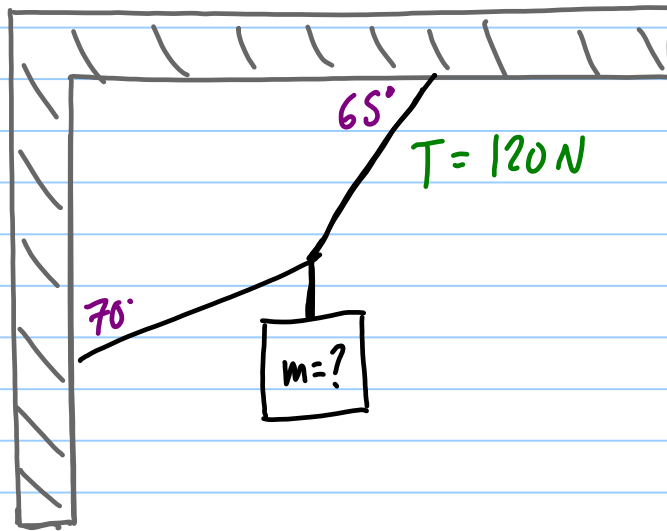


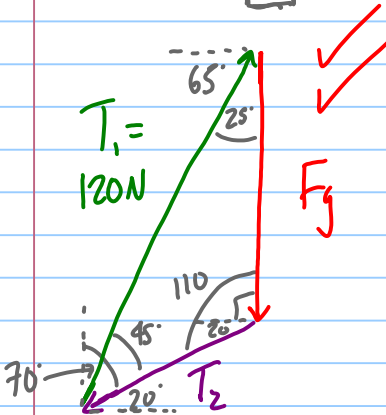
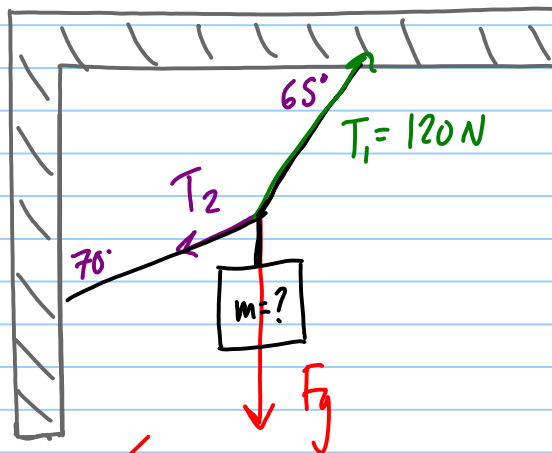
Quiz 1c

Note Title

02/11/2011

If the tension in the right hand rope is 120 N, determine the mass of the hanging object.





$$\frac{F_g}{\sin 45^\circ} = \frac{T}{\sin 110^\circ} \quad \checkmark$$

$$F_g = T \frac{\sin 45^\circ}{\sin 110^\circ}$$

$$= 90.3 \text{ N} \quad \checkmark$$

$$F_g = mg$$

$$m = \frac{F_g}{g} = \frac{90.3}{9.8} = \boxed{9.2 \text{ kg}}$$