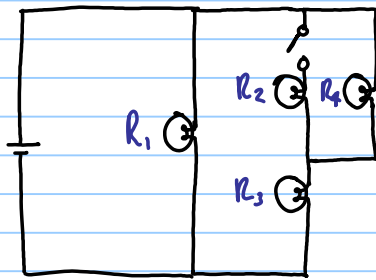


When the switch is closed,  
what happens to:

- The brightness of  $R_1$
- The brightness of  $R_3$
- The brightness of  $R_4$
- The voltage drop across  $R_3$
- The voltage drop across  $R_4$



When the switch is closed,  
what happens to:

- a) The brightness of  $R_1$
- b) The brightness of  $R_3$
- c) The brightness of  $R_4$
- d) The voltage drop across  $R_3$
- e) The voltage drop across  $R_4$

- a) same ✓
- b) brighter (increase) ✓
- c) dimmer (decrease) ✓
- d) increase ✓
- e) decrease ✓